

# **WinTV-USB**

# **WinTV-USB-FM**

## **Installation and Reference Manual**

***Hauptpage!***<sup>®</sup>

A thick, textured red brushstroke underline that spans the width of the text above it, with a slightly irregular, hand-painted appearance.

# **WinTV-USB**

# **WinTV-USB-FM**

## **Installation and Reference Manual**

Copyright (c) Hauppauge Computer Works, Inc. 2001- 2003

Hauppauge Computer Works, Inc.  
91 Cabot Court  
Hauppauge, NY 11788

Telephone: 631-434-1600  
Fax: 631-434-3198  
Tech Support: 631-434-3197

Hauppauge Computer Works, GmbH  
Krefelder Straße 673e  
41061 Mönchengladbach, Germany

Telephone: 02161-694880  
Fax: 02161-6948815  
BBS: 02161-177353  
Technical Support: 02161-6948840

Hauppauge Computer Works, Ltd  
6 Bank Chambers  
Borough High Street  
London, U.K. SE1 9QQ

Phone: 0207-378-1997  
Fax: 0207-357-9171  
Technical Support: 0207-378-0202  
BBS: 0207-357-6587

Internet addresses:

Sales: [sales@hauppauge.com](mailto:sales@hauppauge.com)  
Technical Support: [techsupport@hauppauge.com](mailto:techsupport@hauppauge.com)

**[www.hauppauge.com](http://www.hauppauge.com)**

# FCC Statement

## Radio Interference Statement:

The **WinTV USB** have been tested and found to comply with the limits for a Class B digital device, pursuant to part 15 of the FCC Rules. These limits are designed to provide reasonable protection against harmful interference in a residential installation. This equipment generates, uses, and can radiate radio frequency energy and, cause harmful interference to radio communications. However, there is no guarantee that interference will not occur in a particular installation. If this equipment does cause harmful interference to radio or television reception, which can be determined by turning the equipment off and on, the user is encouraged to try to correct the interference by one or more of the following measures:

- reorient or relocate the receiving antenna.
- increase the separation between the equipment and receiver.
- connect the equipment into an outlet on a circuit different from that to which the receiver is connected.
- consult the dealer or an experienced radio/TV technician for help.

FCC ID: H90WINCAST

MADE IN USA

CAUTION: Changes or modifications not expressly approved by the party responsible for compliance to the FCC Rules could void the user's authority to operate the equipment.

## CE Statement:

This equipment has been tested and complies with EN 55013, EN 55020 and IEC 801-3 part 3 standards.



# Table of Contents

## WinTV-USB Installation and Reference Manual Revision 4.9

FCC Statement .....	
CE Statement.....	

### Installing the WinTV-USB 1

Installation overview .....	1-1
Board connections .....	1-1
WinTV-USB connectors .....	1-2
Installing the WinTV-USB.....	1-2
Installing the WinTV-USB under WindowsXP .....	1-2
Installing the WinTV applications .....	1-4
Installing a TV antenna and A/V cables to WinTV-USB .....	1-4
Connecting audio from WinTV-USB to your PC .....	1-5
Enabling live audio over USB.....	1-5
Connecting WinTV- USB to a Sound Card .....	1-6
Connecting WinTV-USB to a VCR, Video Camera or Camcorder .....	1-6
Adjusting the Audio Volume .....	1-7
Installing the WinTV-USB under Windows98 or 2000.....	1-8

### The WinTV32 & WinTV2000 application 2

WinTV-2000 application.....	2-1
Running the WinTV application .....	2-1
Video Capture with WinTV2000 .....	2-3
The WinTV-32 application .....	2-5
Motion Video Capture .....	2-6
Using the mouse in WinTV.....	2-6
Single click TitleMode/NoTitleMode makes WinTV easy to use! .....	2-7
Setting up your TV channels.....	2-8
Setting preferences in Title mode .....	2-8
Setting full screen TV mode .....	2-9
Image Save, Print, Copy to Clipboard .....	2-10
Adjusting the video image color .....	2-11
Options menu .....	2-11
Keyboard control of the WinTV application .....	2-12
Setting up a shortcut to the WinTV application .....	2-12

### Creating Digital Video movies with WinTV-Capture 3

Overview of Video Clip Capture .....	3-1
Setting the video image size .....	3-3
Setting the number of frames per second captured.....	3-3
Preview Video .....	3-5

Using Audio with WinTV-Capture .....	3-5
Suggestions on capturing video .....	3-5
Tips on improving capture performance.....	3-7
<b>Teletext Data Reception using VTPlus</b>	<b>4</b>
Installation of the VTPlus software .....	4-2
Running VTPlus.....	4-2
Quikselect.....	4-4
Dynamic Data Link to Teletext.....	4-4
<b>Using the WinTV-radio Application</b>	<b>5</b>
Running the WinTV-radio application .....	5-1
The WinTV-radio window.....	5-1
Using the WinTV-radio buttons .....	5-2
Programming the Presets .....	5-2
<b>How WinTV Works</b>	<b>6</b>
<b>Troubleshooting</b>	<b>7</b>
Troubleshooting the WinTV-USB driver .....	7-1
Problem: Bad colors in the TV window.....	7-2
Problem: Poor TV picture quality .....	7-2
Problem: TV picture displays a black screen .....	7-3
Problem: Snapshots don't display correctly.....	7-3
<b>Updating the WinTV-USB driver</b>	<b>8</b>
Updating the WinTV-USB Driver .....	8-1
Removing the WinTV-USB driver with HCWCLEAR.....	8-2
Restarting the WinTV-USB driver with HCWRESET .....	8-4
<b>Technical Support</b>	<b>A</b>
Technical support telephone .....	A-1
Service .....	A-1
<b>Warranty</b>	<b>B</b>
Warranty.....	B-1

Trademarks: WinTV and the Hauppauge logo are registered trademarks of Hauppauge Digital, Inc. Microsoft is a registered trademark and Windows and the Microsoft logo are trademarks of Microsoft Corporation. IBM and PC are trademarks of International Business Machines Corporation.

07/30/02

# Introduction

This manual covers all of the **WinTV USB** models:

## **WinTV-USB**

## **WinTV-USB-FM**

References to the **WinTV USB** apply to all models. The Windows98 driver for all of the **WinTV USB** models will be referred to as the **WinTV-USB driver**, and the installation CD-ROM will be referred to as the **WinTV-USB Installation CD-ROM**.

The WinTV application, which is referred to in this manual as the **WinTV application**, will show your TV or video in a window on your PC screen. There are two versions: the WinTV32 and the WinTV2000. Both applications have the same features, but have a different “look and feel”.

For models which have particular features (such as the chapter on the Radio application), we will note which models these features are available on.

For a description of how the WinTV USB displays video on your VGA screen, see the chapter entitled **How WinTV-USB Works**.

---

---





# Installing the WinTV-USB

**N**ote: *DO NOT PLUG THE WinTV-USB into your PC until your PC has fully booted..*

To install **WinTV-USB** under Windows XP, 98 or 2000, you will follow these steps:

- ✓ Plug the **WinTV-USB** into your PC or laptop's USB port (after booting into Windows)
- ✓ Install the drivers from the **WinTV-USB Installation CD-ROM**
- ✓ After the **WinTV-USB** driver is installed, you will then install the **WinTV application software** from the WinTV Installation CD-ROM

## Contents of the WinTV-USB package:

**WinTV-USB** or **WinTV-USB-FM** unit

**1 meter audio cable** - sound cable for connecting between the **WinTV-USB** and your sound card

**S-Video to composite adapter**

**FM radio antenna (on WinTV-USB-FM models)**

**WinTV-USB** Warranty registration card

**WinTV-USB Installation CD-ROM** with:

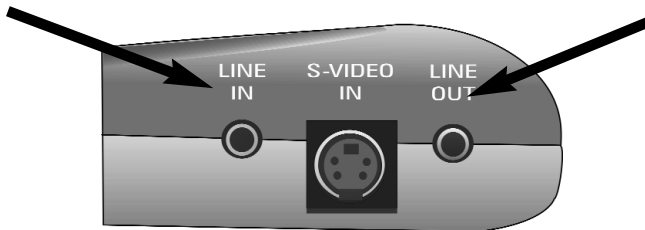
WinTV2000 application

WinTV driver for WindowsXP, 98SE, Me and Windows2000

## WinTV-USB connections

The following chart shows the connectors of the **WinTV-USB**.

<b>FM:</b>	FM radio antenna connection (on some models)
<b>TV:</b>	TV antenna or cable TV connection
<b>LineOut:</b>	Audio output 1/8" minijack (connects to sound card LineIn jack)
<b>S-Video In:</b>	S-video input from an external A/V source. Composite video can be used via the S-Video to Composite adapter.
<b>Line In:</b>	Audio input from an external A/V source (1/8" minijack)



## Installing the WinTV-USB

---

**N**ote: *DO NOT PLUG THE WinTV-USB into your PC until your PC has fully booted..*

Turn on and boot into WindowsXP, Windows98SE, WindowsMe, Windows 2000.

Then plug the **WinTV-USB** into one of the USB connectors on the back of your PC or laptop, not a USB hub or keyboard.

## Installing the WinTV-USB driver for Windows XP

---

After the WinTV-USB is plugged in to a USB socket, the **Found New Hardware Wizard** will appear.

Click **NEXT** to **Install the Software Automatically (Recommended)**.



When you see this dialog box, insert the **WinTV-USB Windows Installation CD-ROM** into your CD-ROM drive and click **NEXT**.



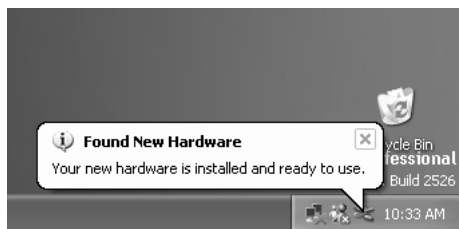
If the the Hardware Installation dialog box appears, click **Continue Anyway**.



Click **Finish** to complete the driver installation.



When the driver installation is complete, this message should appear on the Windows start bar.



### Installing the WinTV applications

After the **WinTV-USB** driver has been loaded, run the **WinTV** setup program.

Run **SETUP.EXE** from the **WinTV-USB Installation CD-ROM**. For example, if your CD-ROM is on driver E:, click **Start** then **Run** then **E:\Setup.exe**

Click **Install** to start the WinTV installation.



Choose the language you would like and click **OK**.

Click **Next / Next / Next**.

After all of the files have been installed, you will see the **Installation Complete**. Click **OK**.

### Connecting the TV antenna and A/V cables

Connect a **TV aerial** or **cable TV** to the WinTV-USB connector marked **TV**. If you have a WinTV-USB with FM radio, attach the supplied FM antenna to the connector marked **FM**.

You can also connect an **A/V source** such as a VCR, camcorder or video camera to the WinTV-USB. Connect the video from your A/V source to the **S-Video In** connector. If you have a composite video source, use the **S-Video to Composite** adapter. Connect the audio from your A/V source to the WinTV-USBs' **Line-In** jack.

## Connecting audio from WinTV-USB

There are two ways that audio gets into a PC or laptop from the WinTV-usb:

- use the supplied 1 meter audio cable to bring analog audio from the WinTV-USB into the Line-in jack on your PC or laptop, or
- by using the USB cable to bring digital audio from the WinTV-usb to your PC or laptop.

The default audio setting is: **Analog audio input to the PC while watching live TV** and **Digital audio over USB while recording**. This gives the best audio quality.

### If your PC or laptop computer has a sound card with a Line-In audio connector:

Connect audio from WinTV-USB's **Line-Out** jack to your sound card's **Line-In** jack. To do this, plug the supplied **1 meter audio cable** into the jack marked **Line Out**. Plug the other end into your PC's sound card **LineIn** jack.

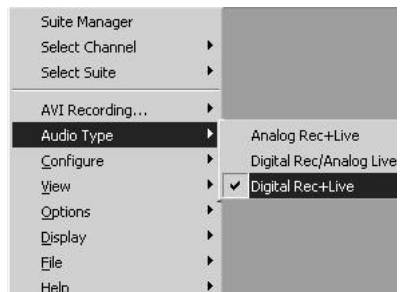
### If your PC or laptop does not have a Line-In connector:

You can enable **Digital audio** over USB while watching live TV. To do this, see the section "**Enabling live audio over USB**".

## Enabling live audio over USB

After you complete the WinTV-USB driver installation, the default Audio setting is: **Analog audio input to the PC while watching live TV** and **Digital audio over USB while recording**.

If your PC or laptop does not have a Line-in jack, or if you would like to simplify the installation of the WinTV-usb, you can enable Digital audio while watching TV and



while recording. To do this, click on the **Menu** button and go to **Audio Type** and select **Digital Rec+Live**.

**Close and reopen the WinTV application** to have the changes take effect.

## **Connecting the WinTV-USB to a Sound Card**

The WinTV-USB can supply audio over the USB bus. If you would like to connect directly to a set of speakers, a headset, to a stereo system or directly to a sound card, follow these instructions.

The board's audio output can be connected using the supplied **Audio Cable**:

- plug one end of the supplied 1/8" **Audio Cable** into the jack marked **LineOut** on the WinTV-USB.
- plug the other end of the **Audio Cable** into your speakers or headset, or a soundcard's **LineIn** jack.

***Note: Most sound cards have three round jacks on the outside of the PC. They are: Microphone Input, Audio Output and Line Input. The Audio Output would go to your speakers, while the Microphone input might go to a microphone (if you are using one). The LineIn jack is normally indicated on the sound card by the words IN or LineIn stamped into the metal bracket on the outside of your PC. This is where you would plug your Audio Cable, Also Some Laptops do not have a Line in and you would have to connect the USB device to the Mic input on the Laptop, or to a seperate set of powered speakers.***

## **Connecting the WinTV-USB to a VCR, Video Camera or Camcorder**

Most VCR's or camcorders have a female RCA jack labeled "Video Out". Most also have a jack labeled "Audio Out". Most video cameras simply have one output connection labeled "Video Out".

To connect the video to the **WinTV-USB**, use shielded video cables (not supplied) with male RCA connectors on both ends:

- connect from the **"Video Out"** jack on your video camera, VCR or camcorder to the **S-Video input jack** on the WinTV-USB.

***Note:*** WinTV-USB has a high quality S-Video input jack. If your VCR or camcorder uses a Composite video connect (this is often a yellow RCA jack), use the supplied S-Video to Composite video Adapter.

To connect the audio from your VCR or camcorder, use an 1/8" stereo minijack extension cable (1/8" male minijacks on one end, and RCA on the other end) and connect the "Audio Output" RCA on the VCR or camcorder to the audio **LineIn** jack on the **WinTV-USB**.

***Note:*** If you need a female RCA to 1/8" minijack adapter, these adapters can be found at most Radio Shack stores.

## **Adjusting the Audio Volume**

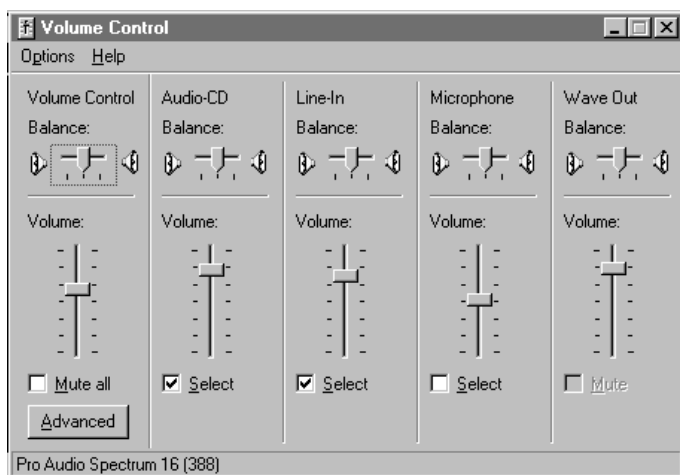
If you are using bringing the audio from the WinTV-USB into your PC through the "audio over USB" feature, or connecting to your Sound Card, the WinTV application can change the audio volume coming from the WinTV-USB by adjusting the **LineInput sound volume** of the **Volume Control** program in Windows.

The **Volume Control** program is normally installed with Windows or by the sound card installation program, and allows the control of volume from the various sound sources. If you cannot hear sound when running the application, check the volume level of **LineInput** in **VolumeControl**. The VolumeControl application is started by either **double clicking the speaker icon** in System tray (found normally in the lower right hand corner of your computer screen), or clicking

**Start/Programs/Accessories/Multimedia/VolumeControl**

or

**Start/Programs/Accessories/Entertainment/VolumeControl**



You should see **Line-In balance** as one of the selections. If not, then click on **Options/Properties** and under **Show the following volume controls** check **Line-In**. Then click **OK**.

You should now see a selection for **Line-In Balance**. Make sure the **Select box** is checked, then raise the volume to about 1/2 of the way to the top. This should be a good starting point for the volume control.

If Line-In is muted or not selected, **unmute or select it** to hear audio from the WinTV USB.

In the WinTV application under the **Configure/Audio** menu (in WinTV200 click on the **AUD button**), the **Mixer ID** should be set at **Line-In**.

As you adjust the audio volume in the application, you should see the slide bar in the Volume Control window rise and fall.

## **Installing the driver under Windows98 or Windows2000**

---

After the **WinTV-USB** is installed, the **Add New Hardware Wizard** will appear.

Select **Search for the best driver for your device (Recommended)**.

Click **NEXT**.

When you see this dialog box, insert the **WinTV USB Installation CD-ROM** into your CD-ROM drive.



Select **CD-ROM drive** and click **NEXT**.

Once the Hauppauge **WinTV-USB** driver has been detected, click **NEXT**.

You will see a number of files copied to your hard disk.



You might be asked to insert your Windows CD-ROM. **Be sure to use the exact version of Windows CD-ROM which is installed on your PC!**

Click **FINISH** to exit to Windows.

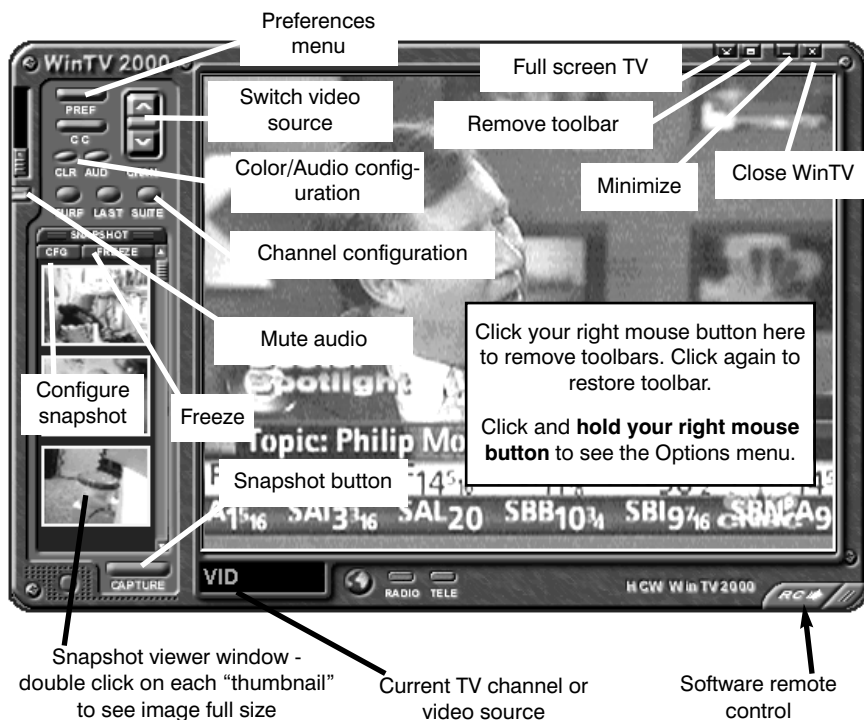
**N***ote: If Plug-n-Play does not correctly load the driver, you may manually load the driver from the WinTV-USB Installation CD-ROM. Open the USB folder and double click the file "USB98.exe" to manually install the driver.*

Now you need to run the Setup program from the WinTV-USB Installation CD-ROM. Either click on **My Computer** and select the CD-ROM drive where the **WinTV-USB Installation CD-ROM** is inserted, and then double click on the program **Setup.EXE**. Or you click on **Start** then **Run** and then type the letter of your CD-ROM drive (for example: **D:**) and **SETUP.EXE**

This will launch the WinTV-USB application and utilities installer.



# The WinTV2000 Application



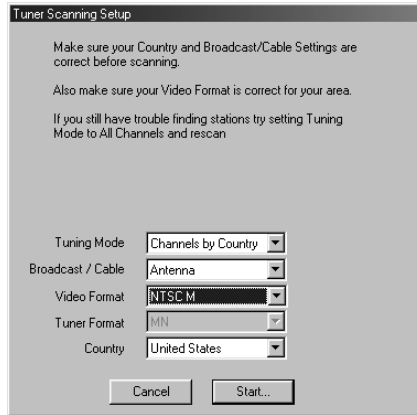
## Running the WinTV application

After installing the WinTV application from the **WinTV USB Installation CD-ROM**, you will see icons on your Windows background. Start **WinTV-2000** or **WinTV-32** by **double clicking on its icon**.

Once the WinTV application is initialized, you should see the **RED light illuminate on the WinTV USB**.

You can also click on **Start/Programs/HauppaugeWinTV** and then click on the WinTV2000 or WinTV32 icon.

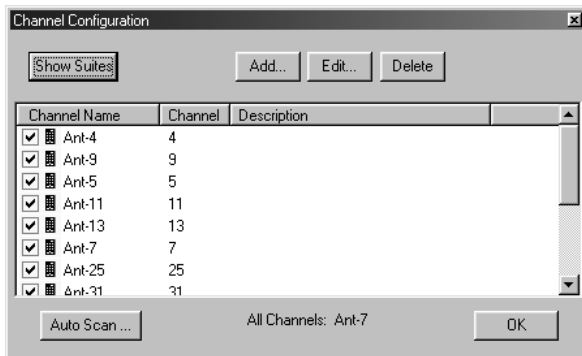
The first time you run WinTV, you will be asked to scan for TV channels. Click **OK**.



If you are using a cable TV connection, in the **Broadcast/Cable** menu item, select **Cable**.

In **Video Format**, in **North America** choose **NTSC M**. In **South America**, choose **PAL M** or **PAL N**.

After the scan is complete, you will have a list of TV channels which are active in your area.

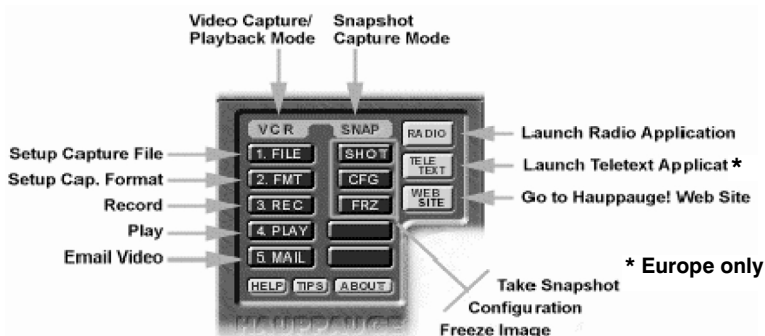


You can **modify the channel names** by **single clicking on the channel**, then clicking **Edit**. Change the channel name to the name that you would like to have displayed in the WinTV toolbar.

To set up a **External video source**, go into Channel configuration (click on **Suite** on the **WinTV2000** or click **Configure/Channels** on **WinTV-32**), and click on **INPUT Sources**. Highlight **COMPOSITE** and click **ADD**. Pick your video format and give it a name, then click **ADD**. Now you have a external video channel.

## Video Capture with WinTV2000

Capturing both still images (BMP, GIF, JPEG etc) and motion videos (AVI) is simple with the WinTV-USB. To configure and activate these functions, use the integrated software remote control by clicking the **RC** button in the WinTV2000 application. WinTV32 has identical features, which can be selected from the **still camera** and **movie camera** buttons provided on the top of the WinTV32 toolbar.



**Snapshot Capture:** Multiple still images can be **captured**, allowing you to select or discard images and adjust the image size before saving. Use the **CFG** button (**below**) to set the default image size (the image size can also be altered by clicking the **Right** mouse button on a **chosen image**).

**Motion Video Capture:** The buttons under the Video Capture section are numbered to aid clarity.

First, click on **1. FILE** to set the **Name and Location** of the file that you want to create, for example: **TEST.AVI** in **C:\** (as shown, we recommend adding the **.avi** extension at the end of the file name).

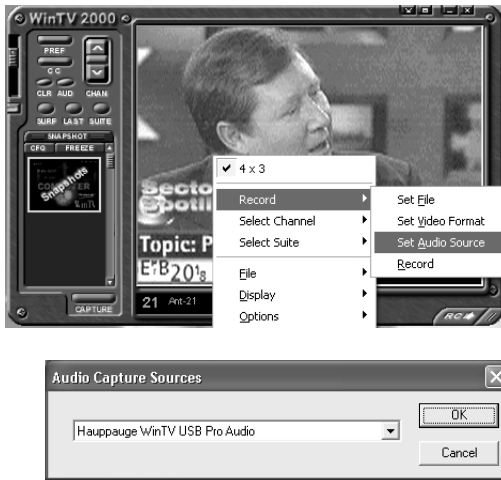
Click on **FMT** to set the **Video Format, Frame Size and Frame Rate** (typically: 15-bit RGB, 320x240 and 25 frames per second, respectively).

To start **Recording**, click on **REC**. To stop Recording, click on **REC** again.

A file name ending with the extension **.AVI** will be created and copied to your hard disk. To **play back** the recorded file, simply click on the **PLAY** button. Alternatively, locate the file and **double click** on it.

**Warning:** Motion (avi) files can consume a large amount of disk space; typically 100MB per minute.

**Setting up for audio capture:** If you are using **digital audio over the USB bus**, then you must configure the audio capture. Click and hold the **right mouse button** on the WinTV window and you will see the drop down menu. Click **Record** then **Set Audio Source**, and set **Audio Capture Sources** to



### Hauppauge WinTV-USB Pro Audio.

**Note:** If you find that there is no audio while playing back your AVI files, this is because the sound card has not been setup to record audio from its 'Line-in' socket. To enable audio recording, open the **Recording Control** panel by clicking **Start / Run** and then

**SNDVOL32 /REC** This will open the Recording Control panel. Make sure that 'Line-in' is enabled (this is sometimes called 'Line' or 'Aux').

**Note:** You can use **AMCAP** as an alternate to capture AVI files with **WinTV-USB**. The program is called **AMCAP** on the **WinTV-USB Installation CD-ROM**, and can be found in the **MISC\UTILITY** directory. This program will allow you to capture video files in a Microsoft AVI file format to your hard disk. They can be **played back** to your VGA screen by using Windows Media Player.

## Using the mouse in WinTV

---

The Windows mouse is used to move the TV window, resize the window, select menu options and make the window appear in full screen or adjustable screen size. Use the left and right buttons, the middle mouse button (if your mouse has one!) is not used.

### Single click TitleMode/NoTitleMode makes easy to use!

---

The **left mouse button** is used for all control and select functions. The **right mouse button** is clicked inside the video window to hide or display the tool

---

and menu bars and to turn off the full screen TV mode.

These modes are called **TitleMode** and **NoTitleMode**. You can toggle back and forth between TitleMode and NoTitleMode by simply **clicking your right mouse button when your mouse is inside the video window**.

The WinTV window can be moved in **NoTitleMode** by clicking and holding your left mouse button in the middle of the WinTV window and moving it to the new position. Then let it go!

Move the **WinTV** window in **TitleMode** by clicking and holding your mouse button on the WinTV Title Bar, holding it down and dragging it to the new position.

You can set a different size and a different place on your VGA screen for the WinTV window in **TitleMode** and **NoTitleMode**. Then by simply clicking with the right mouse button, the window will switch from one saved size and place on the screen to the other! Try clicking your right mouse button several times in the middle of the TV window and see what happens.

To set the window size, “grab” a corner of the **WinTV** window with your mouse (hold down the left mouse button when it is on one of the corners of the window) and then drag it to the preferred size, then release the mouse button.

For example, if you would like to watch without the tool/menu bars in a small corner of the Windows screen, click the right mouse button inside the video window and the tool/menu bars will disappear. Then drag the window to its preferred size and location on the Windows screen. Now click the right mouse button inside the window and the application will now save the correct size and location on screen for **NoTitleMode**. Every time you select the **NoTitleMode** by right clicking in the window, the window will resize and move to the saved position.

With WinTV-32, you can select which bars and indicators are shown when in the TitleBar and NoTitleBar modes by clicking on **View**. You can eliminate the status bar and the toolbar in the TitleMode or add the status bar in the NoTitleMode.

## **Setting up your TV channels**

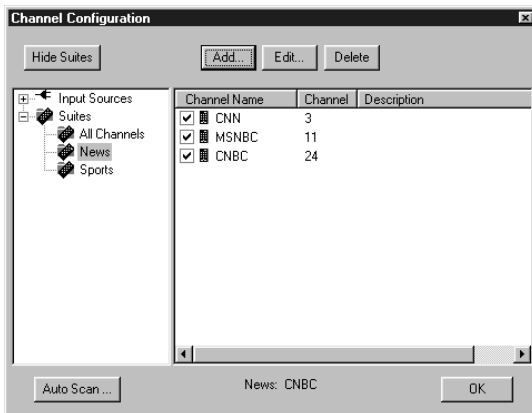
To set up the TV channels with WinTV-32 in the application, click on **Configure/Channels/SuiteManager**.



In **WinTV-2000**, click the **Suite** button.

You'll see the **Channel Manager**. From the Channel Manager, you can **Add**, **Edit** or **Delete** channels.

You can also create **Channel Suites**, which are subsets of the All Channel suite. For example, you can have a suite of just TV news channels, and name this suite "News". Channel Suites allow you to create a subset of all the channels, so that you can channel surf through only those channels. To set up a new Channel Suite, click on **Show Suites**. Then click on **Suites** (in the left column), then click **Add**. You can then **name the suite** and **add channels to the suite**.



To change to a suite, in the WinTV toolbar, right click your mouse button in the **Channel Suite area** (the default is All Channels). You will then see a list of suites. Click on the one you would like to switch to.



## Setting preferences in Title mode

Click **Display/Preferences/View** and then click on the **Title Mode** tab.

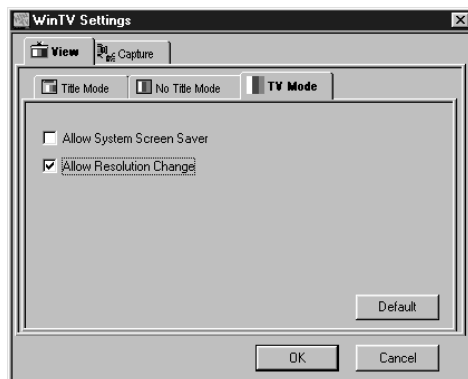
**Aspect Ratio On** forces the TV window height and width ratio to 4:3. When turned off it will allow arbitrary aspect ratios.

**Annunciators On** display the TV channel on screen when you change channels, and display the volume when you adjust the volume.



## Setting full screen TV mode

Click **Display/Preferences/View** and then click on the **TV Mode** tab.



### Set **Allow Resolution Change**.

Once you have clicked on Allow Resolution Change, if you then click on the TV icon on the WinTV-32 Toolbar, the WinTV will switch to full screen.

## **Image Save, Print and Copy to Clipboard**

The process to save, print or copy an image starts with the digitizing of a single video frame. When one of these functions are clicked on, the next video frame is moved into your PC's main system memory instead of the VGA display. Your PC's processor then converts the digitized video image into a 24-bit DIB image (a format which is used internally in Windows), and then copied back into the VGA memory so that you can see the image which will be printed or saved. This becomes a "frozen" image in the window.

The video images which are digitized can be saved to disk, printed to a color or black/white printer or copied to the clipboard. These functions can be viewed from the File menu:

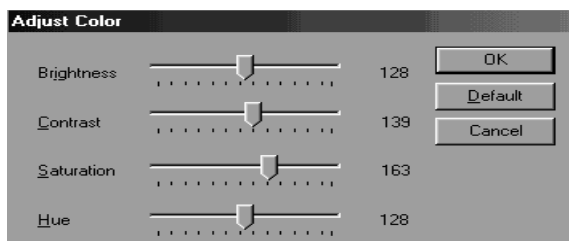


There are a few things which need to be noted. First, because a video frame is composed of two "fields", an odd field with the odd lines in the image and an even field composed of the even lines, there might be a distortion in the frozen image if there was rapid motion while the image was being moved into main system memory. This distortion is called "interlaced artifact".

Another item to note is that the video image, when converted into a 24-bit DIB image, will look lighter than it did when it was in motion. You can adjust the image's brightness, contrast and color saturation and hue by clicking on Configure/Color. These adjustments are made during the digitizing process on the board and will affect both the "live" image and the frozen image.

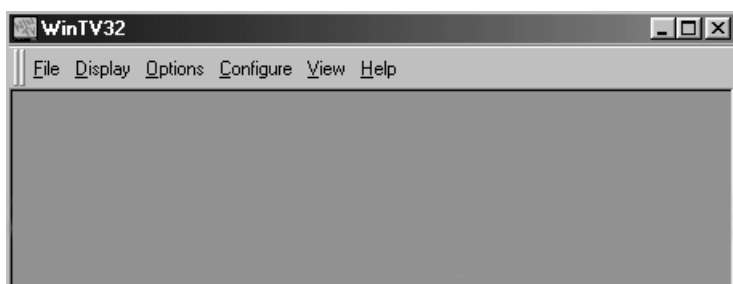
## Adjusting the video image's color

You can adjust the brightness, contrast saturation and hue of the live TV image by using the color adjustment menu. Click on **Configure/Color** to get the adjustment menu:



## Options Menu

The Options Menu has settings for Always-on-Top mode and Aspect ratio mode plus duplicates buttons found on the toolbar for operation without a mouse.



### Always-on-Top mode

The Always-on-Top mode conveniently puts the TV window "on top of" other Windows windows. In this mode, you can easily move the TV window to the No-Title mode by clicking the right mouse button in the middle of the TV screen.

### Aspect ratio

The natural TV window size has a 4:3 aspect ratio. By unclicking the Aspect Ratio setting in the Options menu, you can change the TV window to any size you want! Make it tall, short or any size. With Aspect Ratio turned on, the window size will always be forced to a 4:3 ratio.

## **Keyboard control of the WinTV application**

---

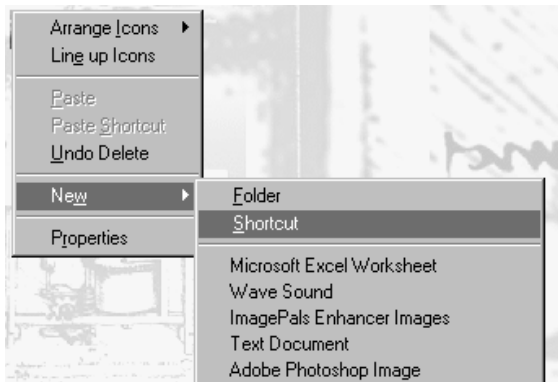
Convenient keyboard controls duplicate the functions of the toolbar.

Volume Up	=	Page Up
Volume Down	=	Page Down
Mute	=	Ctrl+M
Channel Up	=	Plus (+)
Channel Down	=	Minus (-)
Print a Frame	=	Ctrl+P
Copy to Clipboard	=	Ctrl+C
Copy from Clipboard	=	Ctrl+V
Freeze Frame	=	Ctrl+F
Full screen TV mode	=	Ctrl+T
Reset tool bar	=	Alt +M
Take a snapshot	=	Space bar
Right mouse button	=	Title mode/No title mode/Turns off TV mode

## **Setting up a shortcut**

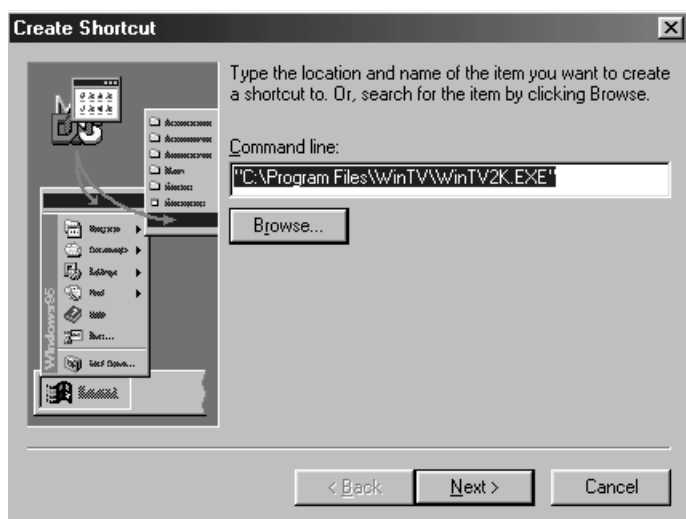
---

You can set up a shortcut to the application at any time. To do this, click your right mouse button on your Windows background. Then click on **New**. You should see the following dialog box:



Then click on **Shortcut**.

Click on **Browse**, then look in the **Program Files/** directory. Select **WinTV 32.exe**.



Then click on **NEXT** to finish to set up the shortcut.

## The WinTV32 application



\* on some model 's

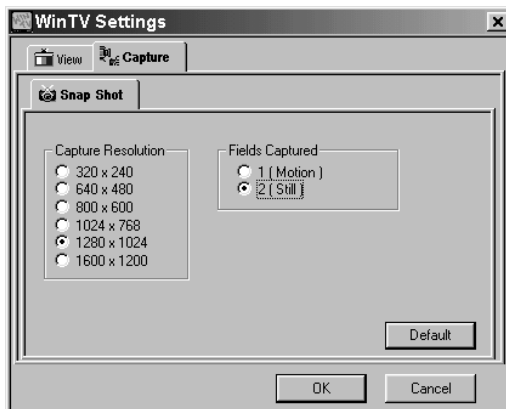
## Still Frame Image Capture mode on WinTV32

With WinTV-32, you can switch into the high quality image capture mode by clicking on the **Still Frame Image Capture Mode button** on the toolbar. When you click on this button, you will see the Image Capture Toolbar.



Click on the **Configure icon** in the Image Capture Toolbar to set the image capture resolution and to configure for either still or motion video images.

In **WinTV2000**, to configure still image capture, click on the **CFG button** (found just above the **Snapshot Viewer window**).



You can capture images up to 1600x1200 pixels.

To reduce the effects of motion in the video image, but with lower image resolu-

tion, in the **Fields Captured option** choose **1 (Motion)**.

## **The WinTV-32 application**

### **Motion Video Capture mode with WinTV32**

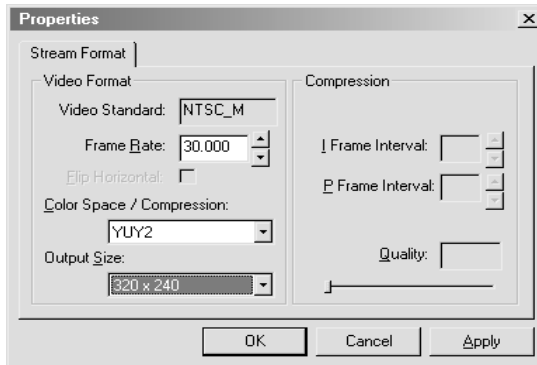
You can switch the WinTV-32 application into the motion video capture mode by clicking on the **Motion Video Capture Mode** button on the toolbar (see page 2-2 for its location).



In WinTV-32, to configure motion image capture, click the **422/YUV** (configuration) button.

In **WinTV-2000**, to configure motion image capture, first open the software remote control (click the **RC button** in the lower right hand corner of WinTV-2000). Then click the **Advanced Controls button** (to roll down the advanced controls), and then click the **FMT button**.





For best performance when capturing, set the **Image Format to YUY2** or **BTYUV**, and the **Image Dimensions to 320x240**. Although you can capture larger than 320x240, the file size will be larger and the video capture quality will be down graded.

The number of Frames per second captured (up to the limit of 30 fps) is set in the **File Folder icon** in the Motion Video Capture toolbar, or by clicking the **FILE button** in WinTV-2000.



# Creating Digital Video movies with WinTV-USB

## Using SoftPVR to record TV to your PC's hard disk

---

**Note:** The following functions are not currently enabled with SoftPVR: the **OTR** and **Pause** buttons, plus the **Fast Forward** and **Rewind** functions.

**Note:** a Pentium III 800MHz minimum system is recommended for best SoftPVR operation.



To start recording, either click the **OTR (One Touch Record)** or the red **Record button** on WinTV2000. You can also start a recording by using **WinTV Scheduler**.

To stop recording, click **Stop**. To close the recording controls, click the **TV mode button**.

**If you click OTR more than once**, a record timer will be set and the record timer will be set 15 minutes for each time the OTR button is clicked. For example, if you click the OTR button 3 times, the WinTV will record for 30 minutes.

The recorded video file is saved in the **DVCR Recorded File Path** directory. To set this directory, click the **PREF button** (Preferences menu), then the **Movies tab**. In **DVCR Record Path** set the directory for your recordings.



**Record Button:** Clicking the Record button will automatically generate a file name and start recording your audio/video program. Everytime you record a file, a new file is automatically created and the file name is displayed in the record window. The first file name will be `_dvcr001.mpg`. The second file will be `_dvcr002.mpg` and so on.

While recording:

- **Live video** continues to play in the WinTV window

- **The Counter** will display the length of your recording in hours:minutes:seconds
- If you had started recording with the **OTR button**, and had clicked it more than once, the **total time for the recording will also be displayed**. You can also click OTR after a record has been started, and the record timer will be set.

Click the **Stop button** to stop your recording. The recorded audio/video file is then saved to disk using the automatically assigned file name. The Time counter is reset to 00:00:00 after the recording is saved.



**Play Button:** Clicking the Play button will playback from disk the last video file created. With SoftPVR, you can only Play and Pause your videos.



**File Button:** Clicking the File button opens the File menu. The last file recorded is listed in the File name box. In the File menu you can: Rename your recorded video file, Play a video file previously recorded, Delete recorded video files.

### **If you have problems with audio:**

If you find that there is no audio while playing back your AVI files, this is because the sound card has not been setup to record audio from its 'Line-in' socket. To enable audio recording, open the **Recording Control** panel by clicking **Start / Run** and then **SNDVOL32 / REC**. This will open the Recording Control panel. Make sure that '**Line-in**' is enabled (this is sometimes called 'Line' or 'Aux').

## **Overview of WinTV Capture**

---

Live video which is digitized by the video digitizer (see "How WinTV USB works") can be "captured" as a video sequence (or "video clip") by using the WinTV Capture program. This program is provided in the WinTV Application and uses Microsoft's WDM for Windows capability which is built into Windows 98 and 2000.

WinTV-Capture creates a file type called AVI (Audio/Video Interleaved) on your hard disk. This file contains digitized video and, optionally, audio.

WinTV USB gives high quality captured video by storing uncompressed digitized video in an AVI file. This compares with compression methods such as JPEG and MPEG, where some loss of video quality is accepted in order to reduce the amount of data stored. Uncompressed video capture creates high quality digital video movies, but requires optimized system performance to avoid lost video frames (called "dropped frames").

To create the best quality digital videos, use the following steps:

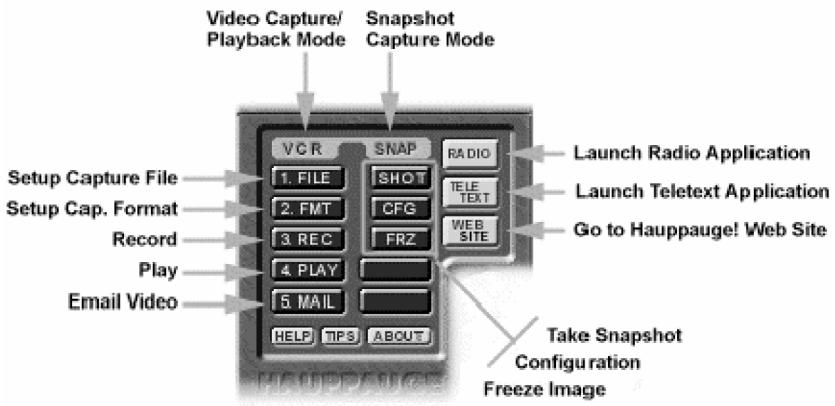
- Compress/Edit, etc. by using the appropriate 3rd party software with these functions
- Edit the raw video. Add special effects, cut, paste, etc. using one of the popular digital video editing programs such as Adobe Premiere, MGI VideoWave or U-Lead MediaStudio.
- After editing the video, compress the video for the playback target. For example, if you are creating a video to be used in a multimedia presentation, compress with either Intel's Indeo or Supremac's Cinepak. If you are creating a CD-Video, use MPEG compression to get up to 74 minutes of video on a CD-ROM.

## Using WinTV Capture

The **WinTV-Capture** program is an easy-to-use program that previews live video, captures an AVI file to disk, and plays back the AVI file to your VGA screen. **WinTV-Capture** can capture and playback video clips, but does *not* provide video editing capabilities. Digital video editing programs such as Adobe Premiere or U-Lead MediaStudio can be used to edit your digital videos.

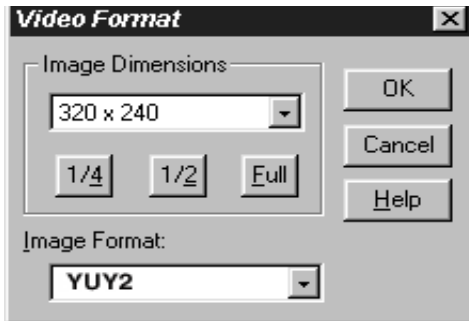
With **WinTV-Capture** you can set the number of frames per second that are captured and the size of the video image. You need to experiment to determine how much video your PC can store to the disk (in terms of image size and frames per second) because capturing video clips is very CPU and hard disk intensive.

-Software Remote Capture window: Found in WinTV 2000



## **Setting the video image size**

The maximum suggested video image capture size is 320x240. When playing back the video on slower PC's, a smaller image size might be needed. To set the image size, click on **FMT Button**:



The **WinTV-Capture** program can use several different types of color formats when capturing video clips. For highest capture performance, choose the **YUY2 OR RGB** formats. These give excellent capture image quality and frame rate, but will give slow performance on playback of **320x240** image size videos.

**YUY2 OR RGB** formats are also good if you plan to edit your video clips with Adobe Premiere or MediaStudio, and plan to compress the digital videos using Cinepak or Indeo. If you do not plan to edit your videos and want good playback performance, choose a smaller image size (160x120). Capture and playback performance is determined by your system configuration, including CPU and hard disk speed.

## **Setting the number of frames per second captured**

To set the number of frames per second captured, click on **File/CaptureSetup**:

The number of video buffers will depend upon how much RAM you have in your system. The maximum number of buffers is 1000.

After setting the video format, the number of frames per second and possibly creating a new file name (by clicking on **File/SetCaptureFile**), you can start capturing video by clicking on the Capture Video icon.

## Using Audio with WinTV-Capture

To capture audio along with video, the WinTV USB must be connected to a sound board capable of saving sound clips. To connect the USB to a sound board do the following:

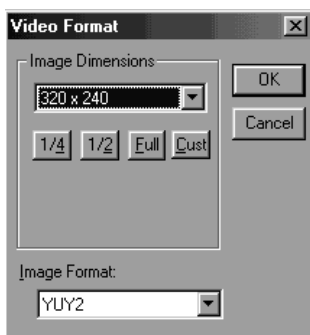
- Make sure the audio output of the card is plugged into the LineInput of the sound board.
- Make sure the LineInput volume for recording is set correctly and not muted. Open the Volume control panel, then click on **Options/Properties**. In the panel **Adjust volume for recording** set for **Recording**. Make sure LineInput is checked under **Show the following volume controls** and that the volume for LineInput is not muted and is set at an appropriate level.

**Note:** *Capturing audio along with video puts a greater strain on your PC than capturing video alone. If your PC drops many frames while capturing audio and video together, then capture the audio separately with the audio capture utility from Windows. The audio can be merged with video later on during the video edit stage.*

## Suggestions on capturing video

Captured image sizes can be either 160x120 or 320x240 pixels.

For the best trade off between image size and captured frames per second, use a 320 x 240 image. With a 166MHz processor MMX (or better) and a reasonably fast hard disk drive, you should be able to capture 30 frames per second using the YUY2 OR RGB format.



The consumption of hard disk space is dependent upon the size of the video image while capturing, the image format plus the number of frames/second. Using the YUY2 OR RGB image format, the following chart shows hard disk space consumed:

<u>image size</u>	<u>frames/second</u>	<u>bytes per second</u>	<u>1 minute video</u>
160x120	15 frames/sec	425 Kbytes/sec	26 Mbytes
320x240	15 frames/sec	850 Kbytes/sec	52 Mbytes
320x240	30 frames/sec	1.7 Mbytes/sec	104 Mbytes

Video consumes quite a bit of hard disk space! At 320x240, you will only be able to store about 10 minutes of video on a 1 Gigabyte hard disk!

To reduce the amount of hard disk space used by your digital videos, you can edit the video using one of the popular 32-bit digital video editors (such as Adobe's Premiere or U-Lead's MediaStudio). After editing, you can compress the video using a software playback format such as Indeo or Cinepak (both of these are supported by Windows98). Typical compression achieved by these formats is 30:1.

## **Tips on improving capture performance**

Do not use DoubleSpace or any other disk compression scheme! This severely slows down your hard disk.

Turn off screen savers and do not connect to a local area network.

Most professionals capture video and audio separately. This allows them to "lay down" the audio track on top of the video tracks while editing. Capturing video separately will increase the performance of your video captures.

There are several hard disks on the market which are designed for higher performance video captures. These drives use 1:1 interleaving and track caching to eliminate gaps caused by a hard disk drive seeking to the next track. They are available with both IDE and SCSI interfaces.



# Teletext Data Reception using VTPlus (In Europe ONLY)

Teletext is used in Europe and other parts of the world to transmit digital data along with a television picture. Teletext data is transmitted in an invisible part of the TV picture called the "Vertical Blanking Interval" or VBI.

Teletext data is normally formatted into pages. A master index is also transmitted which lists the various categories that can be received, and which Teletext page they are being transmitted on. Teletext data must be inserted into the VBI by your TV broadcaster, and can only be received on the **WinTV USB** if the Hauppauge Teletext decoder is installed.

An example of a Teletext page follows. Each Teletext page has a page number, a date and the current time in the right hand corner: (The time shown in a selected page will only Update if "Update Continuosly is selected- see later, in this section).



VTPlus for **WinTV USB** is a sophisticated Teletext software application which runs exclusively on the Hauppauge **WinTV**. VTPlus allows you to view multiple Teletext pages, save or print Teletext pages and create Dynamic Data Links so that Teletext data can be used in other Windows applications. The **WinTV** application does not have to be active while the VTPlus Teletext application is running.

## Starting VTPlus

---

If the VTPlus application is provided on CD-ROM, then it will automatically be installed from the **WinTV-USB Installation CD-ROM**.

To start VTPlus, click on the **VTPlus button in WinTV32** or click on the **TELE button in WinTV2000**. This will close the TV application and launch VTPlus. The WinTV USB cannot run the application and VTPlus at the same time.

You need to create a VTPLUS suite within the WinTV 32 or WinTV 2000 applications. Go to **ConfigureChannels, Suite manager, Suites** and choose **ADD suite** and name the new suite "**VTPLUS**".

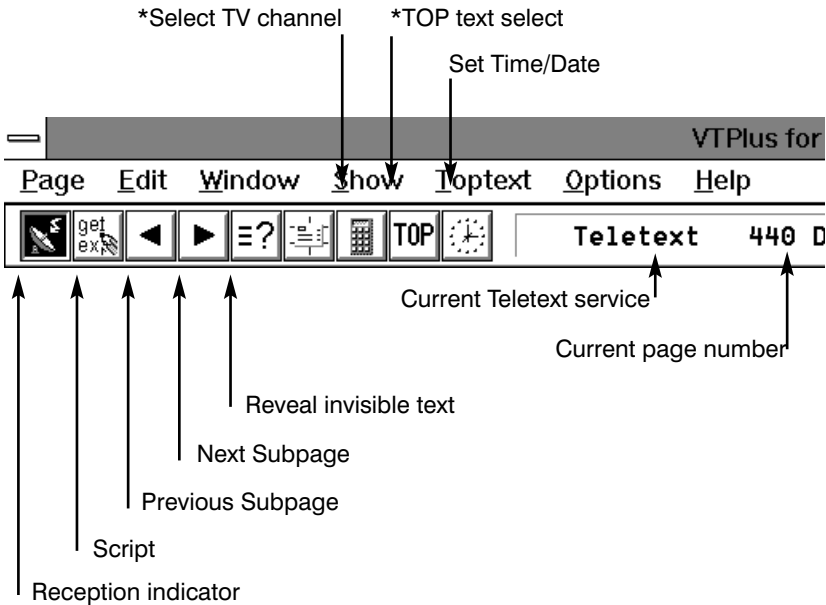
## Configuring VTPlus

---

The first time that you run VTPlus, it is recommended that you first check the following configuration setting:

Go to **Options, Program options**, and make sure that in the **General tab, Multiple Channel Mode** is selected but not Background Memory Active. If Background Memory Active is selected and greyed out then, temporarily, you will need to de-select the Multiple Channel Mode option.

## VTPlus toolbar



\*Note: These functions are not applicable in the UK.

- 1. Reception indicator:** when this symbol is red, your requested page is being received.
- 2. Script:** shortcut for Options/Script. See Help for information on programming the Script.
- 3. Select previous Subpage:** indicates, when dark, that there are subpages before the current subpage. When a light grey, there are no subpages before the current page.
- 4. Select next Subpage:** indicates, when dark, that there are subpages after the current subpage. When light grey, there are no subpages after the current page. For example, if the current page is 100 and there are no subpages in page 100, the Select next Subpage icon will be light grey.
- 5. Reveal button:** shortcut for Show/HiddenCharacters. When you use this button you might see hidden text, such as VPS time codes or answers from a Quiz.

## **Quickselect Teletext pages**

---

By using the Ctrl+N key a Create and Receive page pops up requesting a page number. Type the requested page number. If this page is to be received continuously (every time the page is received, the page is automatically updated), click the Update Continuously box.

Many Teletext pages have a reference to other pages. For example, the TV guide section has a number of page referrals to movie background information which is being transmitted in other pages. Quickselect allows you to select these pages directly. Double click the left mouse button on the desired page number in the current Teletext page, and a new Window appears with the selected page.

If you do not want to open a new Window, but simply change to the new page, push the Shift-Key while double-clicking on the page number in the current Teletext page, and the new selected page will appear in the original window.

With Quickselect, several pages can be called at once. If a Teletext page refers to a page sequence such as "Share Prices: 500-505", mark the first page number with a single mouse click, click a page number and start the reception with a left Doubleclick on the end page. The distance between the selected pages must not be more than 11.

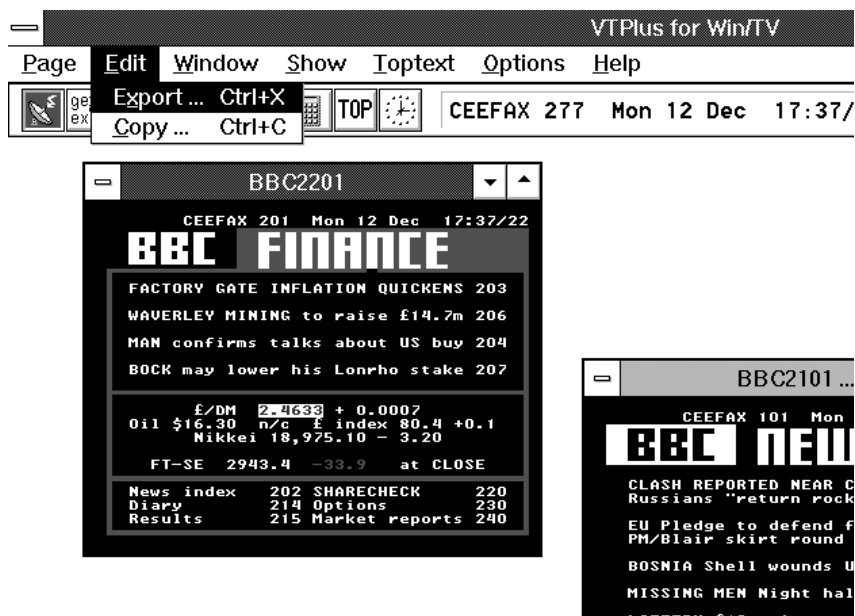
Example: "News from Page 300-303" are selected with by a single click on 300 and a Doubleclick on 303. The multiple page reception will open individual windows for each of the pages within the selected page numbers.

## **Dynamic Data Exchange with Teletext**

---

DDE links can be created between the Teletext pages and any Windows program supporting DDE. Programs supporting a live DDE link from a Teletext page include the Microsoft EXCEL spreadsheet and Microsoft WORD.

To create a link, use your mouse to highlight the section of the Teletext page of interest. For example, if the current Teletext page has financial data, highlight with the mouse the financial item of interest by click on the beginning of the field on the Teletext page, holding your mouse button down, and releasing the mouse button at the end of the field.



Then click on **Edit/Copy** option from the **Edit** menu and **click the left mouse button**. The information is now in the PC memory. To create a link to the DDE supported applications (such as your spreadsheet), select "edit past special" in your application and choose the past link option. VTPlus will now create a direct link to your program.

When the data changes in the selected field on the Teletext page, VTPlus will deliver the data automatically to your DDE supported program. Updates through the DDE occur when all subpages are being received and at every update, when the option Update Continuously is marked.

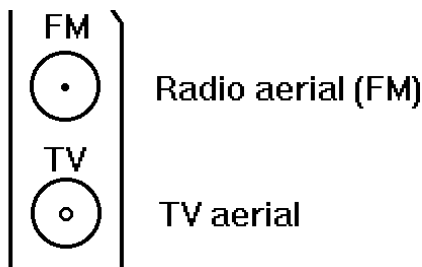
***Note:*** For DDE to operate it is necessary for the VTPlus program to be running and for the specific page to be shown.



# Using the Radio Application

If you have purchased the WinTV-USB-FM, in addition to watching TV you can also tune in radio stations on the FM band.

The radio device has two aerial inputs, one for TV and one for FM radio. If your TV antenna (or cable TV network) carries both TV and FM radio, you can connect to the TV antenna connector only:



## Running the Radio Application

Click on **Start / Programs / Hauppauge WinTV** and then **Radio** to run the radio application.

## The radio window



## Using the Radio Buttons

**Volume:** The audio volume is adjusted by setting the LineIn level in the Volume Control applet.

**Tune:** Fine tune the current radio channel.

**Seek:** Search for the next active FM radio channel.

**Mem:** Sets a FM radio channel preset. To assign the current station to a preset, click on Mem and then on one of the Preset buttons (1-10).

**Mute:** Turn off the sound.

**Mono:** Force mono reception.

**Scan:** Searches for new stations until you click on Stop. Click the RIGHT mouse button anywhere on the -radio window to set the Scan mode.

**Min:** Minimizes the -radio window.

**CD:** Starts the Audio CD-Player for playing back Audio-CD's.

**TV:** Closes the radio application and starts the application.

**OFF:** Closes the radio application.

**1 - 10:** Preset 1 - 10

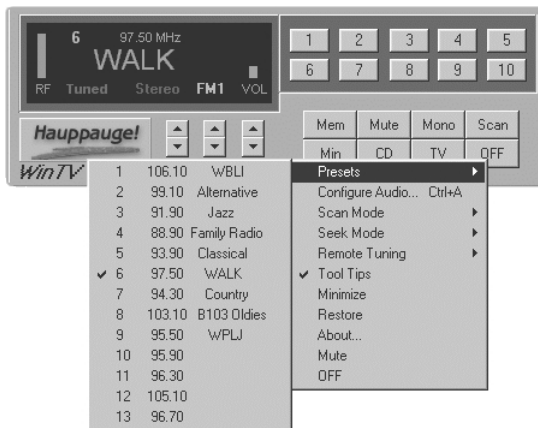
## Programming the Presets

To assign a radio station to a special Preset button do the following:

1. Tune in the desired station with the Seek button (or by using Tune).
2. Click on the Mem button. It will change to red.
3. Click on one of the Preset buttons (1-10).

## Using the right Mouse button

When you click the RIGHT mouse button in the -radio window, this menu comes up:





- 1. Scan Mode:** Presets - When Presets is chosen and the Scan button is clicked, -radio tunes in only the stations which are assigned to the Preset buttons.
- 2. Scan Mode:** All - When All is chosen and the Scan button is clicked, -radio tunes in all radio stations.
- 3. Frequencies:** A list of all frequencies assigned to the preset buttons is shown.
- 4. Tool Tips:** Turn on/off bubble help.
- 5. Minimize:** Minimizes the -radio application window.



# How WinTV-USB Works

Your WinTV-USB contains a 125 channel cable ready TV tuner, a video digitizer, a video compression engine and a USB bus controller. WinTV-USB displays video and audio in the following way:

Under software control, the WinTV-USB either tunes to a TV channel or selects the external audio/video input source.

The audio from the chosen source is passed to the LineOut jack on the WinTV-USB. In some cases, the audio is digitized and compressed, and sent over the USB bus along with the video to the PC.

The video from the selected source is digitized inside the WinTV-USB device and compressed. The compressed video is sent by the WinTV-USB device over the USB cable into your PC.

Once the compressed video is in your PC, the WinTV-USB software driver decompresses the video and sends a reconstituted frame to your graphics display adapter 30 times each second (25 times per second in Europe and other PAL areas).

Your graphics display adapter then resizes the video image to fill the window size that you have chosen for the WinTV window.

Typically, you will use the supplied audio cable to carry the audio signal from the LineOut jack on the WinTV-USB to the LineIn jack on your sound subsystem. Your sound subsystem will then mix this signal with other audio sources before driving your speakers.

Since the decompression of video images is done by software, a processor with MMX is required. The actual rate at which the frames are decompressed depends on the clock speed of your processor, and on whether it is doing any other "big" jobs, such as rendering complex web pages.

The USB data rate of the compressed video is a maximum of 7.5Mbps/sec. If there are other devices on the USB bus, and these devices are using some of the USB "bus bandwidth", the WinTV-USB device cuts the data rate down so that the USB "bus bandwidth" can be shared at a maximum rate of 7.5Mbps/sec.



# Troubleshooting

This chapter includes troubleshooting help for solving common problems.

## **Problem: Bad colors in the TV window**

If your VGA display is running in 256 color mode, the TV picture will be displayed with only 256 colors. This compares with the 16 million different colors which are in the original TV image. The colors in the TV window will change depending upon which Windows programs are being run, and what color palettes are being used.

To fix this problem, first try running your VGA adapter at a minimum of 16 bits per pixel. If you do not have enough memory on your VGA adapter to run at 16 bits per pixel in the current resolution, either lower the resolution (example: from 1024x768 to 800x600) or add more VGA memory to your VGA display adapter.

## **Error message: "could not find "ksclock.dll" or other files on the WIN98 CD"**

Be sure that the directory is correct where windows is looking. Your cd rom drive(D:) for example). in some cases D:\win98 if the windows 98 files are located on your harddrive(preinstalled on the system), it should be looking for c:\windows\options\cabs

## **Error message: "error code 69 during installation of drivers."**

Cancel and browse the CD rom. double click on the USB98.EXE file located in the WIN98 Folder. after installing, the system will reboot.

## **System locks or does not shut down correctly with the USB plugged in:**

Look in your systems BIOS for **Legacy USB support** and set it to **ENABLED**. A bios update may be necessary if this setting is not present.

## **Problem: Poor TV picture quality**

A poor TV image could be caused if your VGA display adapter does not have enough video RAM to hold the TV image. In this case, resorts to Primary Surface mode, which lowers image quality. A memory upgrade on your VGA display adapter might fix this problem.

Another possible cause of this problem could be that your VGA display adapter

does not support Windows 98 Direct Draw. In this case, you might consider an upgrade to a new Windows VGA accelerator which has Direct Draw support and is compatible with the USB.

A poor video picture might also indicate a bad signal. To verify a bad signal, try one or more of these:

Move your antenna or check your cable connection.

Move possible interference sources, such as other computers or television sets, away from your PC.

Contact the cable company to check your signal quality.

### **Problem: TV picture displays a black screen**

The TV picture might display a black screen under the following conditions:

Momentary loss of signal

A weak video signal

Channel changing

A scrambled channel

#### **Note:**

*Changing channels may cause a temporary black screen. To fix the problem, switch the channel up or down, then return to the original channel.*

The audio might continue to broadcast, even though the video picture displays a black screen. This indicates a strong audio signal and a weak video signal.

A scrambled channel is not a valid channel: Set Primary.exe to DIBDRAW Mode!

### **Problem: Snapshots don't display correctly**

When using a 256 color palette, snapshots display incorrectly. To correct the problem, try one or both of these:

Change your Windows color palette to 16-bit.

Copy the image to a graphics program and save the image as a 24-bit image.

Primary Surface mode & DIB Draw

It is sometimes useful to use a mode of operation of your VGA card known as Primary Surface mode or DIB Draw. This can be helpful in eliminating VGA com-

patibility problems, or improving picture quality on some VGA boards when used in some resolutions.

To use Primary Surface mode, run the program "PRIMARY", which is installed with the WinTV application. Click Start/ Programs/WinTV and then, Click on Primary. Click on Force Primary or DIB Draw then close the program by clicking on the X. The Primary program simply makes a setting in the Windows Registry that tells the application to use the Primary mode or DIB Draw mode of operation.

This can be changed at any time to "Allow Overlay" by re-running Primary and clicking Allow Overlay or DIB Draw.

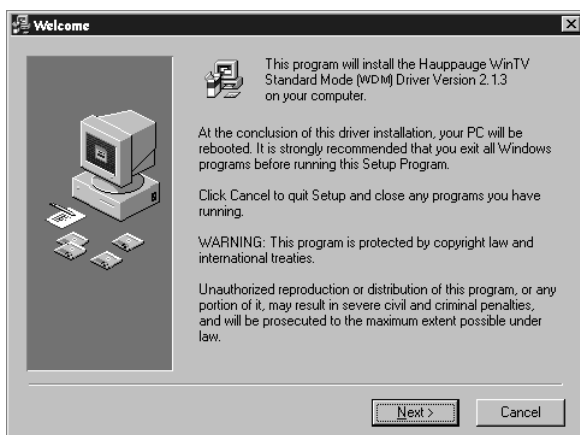




# Updating the WinTV-USB driver

From time to time, there might be a new WinTV USB driver which is an improvement over the existing driver. Driver updates can be downloaded from the Hauppauge Internet Web site (see the front page of this manual for the URL).

The WinTV USB update is combined with the driver uninstaller and the driver installer. Once you have downloaded the updated WinTV USB driver, you can install the update simply by running the downloaded program. You will see the following message:

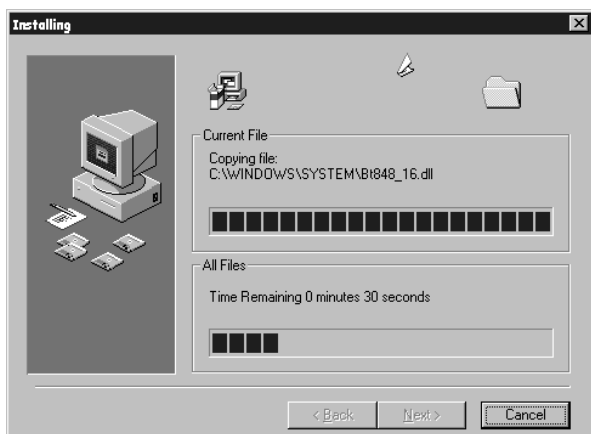


Click **Next**.

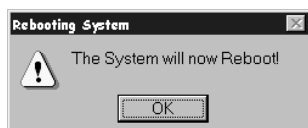


Click **Next**.

The Update program now uninstalls the existing WinTV-USB driver, then copies a number of files to your hard disk:



After the Driver installation program has copied all of the files over to your disk drive, you will be asked to reboot:



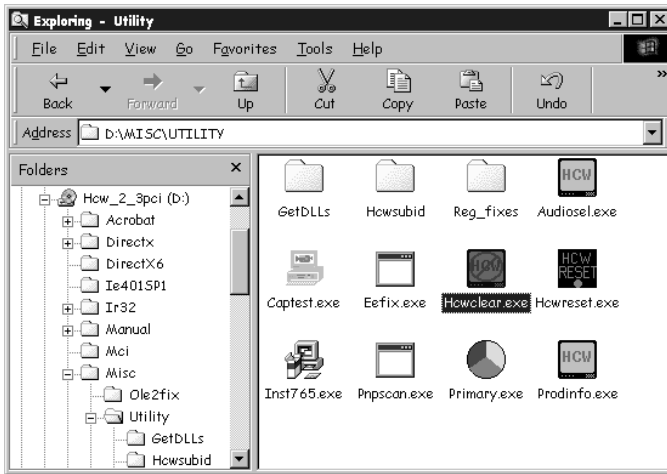
Click OK to reboot your PC.

After rebooting Windows98, an automatic installation of the new driver takes place. You will see the New hardware Found message. After installing a new driver, it is advisable to install the latest applications, including the WinTV32, WinTV2000 and the radio applications (if your board has these features).

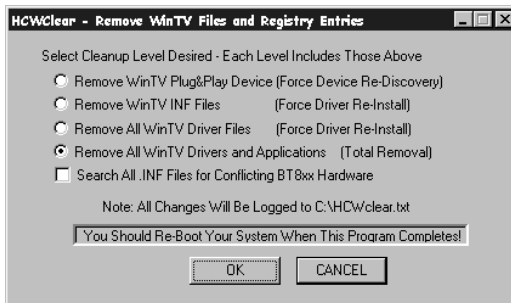
## Removing the driver with HCWCLEAR

On occasion, it might be necessary to remove all traces of the driver on your PC's hard disk. To do this, there is a program on the Installation CD-ROM called HCWCLEAR.

The HCWCLEAR application can be found in the MISC/UTILITY directory:

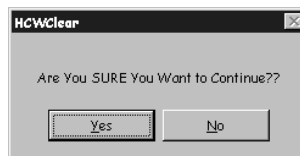


Run HCWCLEAR by double clicking on its icon:



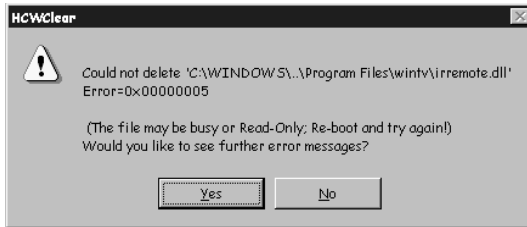
Click OK.

You will then see the following message:



Click Yes.

If there are any errors which come up during the running of HCWCLEAR, then it means that there is an application running which is using the drivers. For example, if you see the following error:



it means that one of the WinTV USB driver files in use . You can either ignore the error, or can can double check to make sure there are no applications running in the system that might be using the WinTV USB driver. In general, to make sure the re-installation is done correctly, all applications using the WinTV USB driver should be stopped before HCWCLEAR is run.

# Technical Support

## Technical support telephone

If you have questions regarding installation or compatibility, please contact our technical support staff at:

(631) 434-3197

(631) 434-3198 Fax

USB FAQ-URL:

**<http://www.hauppauge.com/html/faqusb.htm>**

## Service

If you should need assistance with the installation, operation, or application of your Hauppauge WinTV USB, there are several options available to you. Your primary source for information and problem assistance is always your dealer. Should the need arise, contact your dealer for on-site or repair service.

Hauppauge's Technical Support and Customer Service staff can aid in solving many problems. Our service department is available to repair any Hauppauge product. For completion of repair, the product must be returned to our factory.

If this WinTV USB is not in working order, your only recourse is repair or replacement, as described above. UNDER NO CIRCUMSTANCES will Hauppauge be liable for consequential damages, including any lost savings, lost profits, or any other damages, caused by the use of the WinTV USB or inability to use it, even if the dealer or Hauppauge has been advised of such liability or other claims.



# The Hauppauge Limited Warranty

## Warranty

Hauppauge Computer Works, Inc. warrants the **WinTV USB** to be free from defects in material and workmanship for a period of 2 years from date of initial retail purchase. We will, at our option, repair or replace a defective product. The limited warranty does not cover any losses or damage that occur as a result of:

- Improper installation
- Misuse or neglect or operation with faulty equipment
- Repair or modification by anyone other than Hauppauge Computer Works or an authorized repair agent

Please complete and return the Warranty Registration Form inserted in this manual. To obtain service under this warranty, contact Hauppauge Computer works at (631) 434-3197, or fax "RMA Department" at 631-434-3198. Please see the return procedure in the "Technical Support" chapter.

